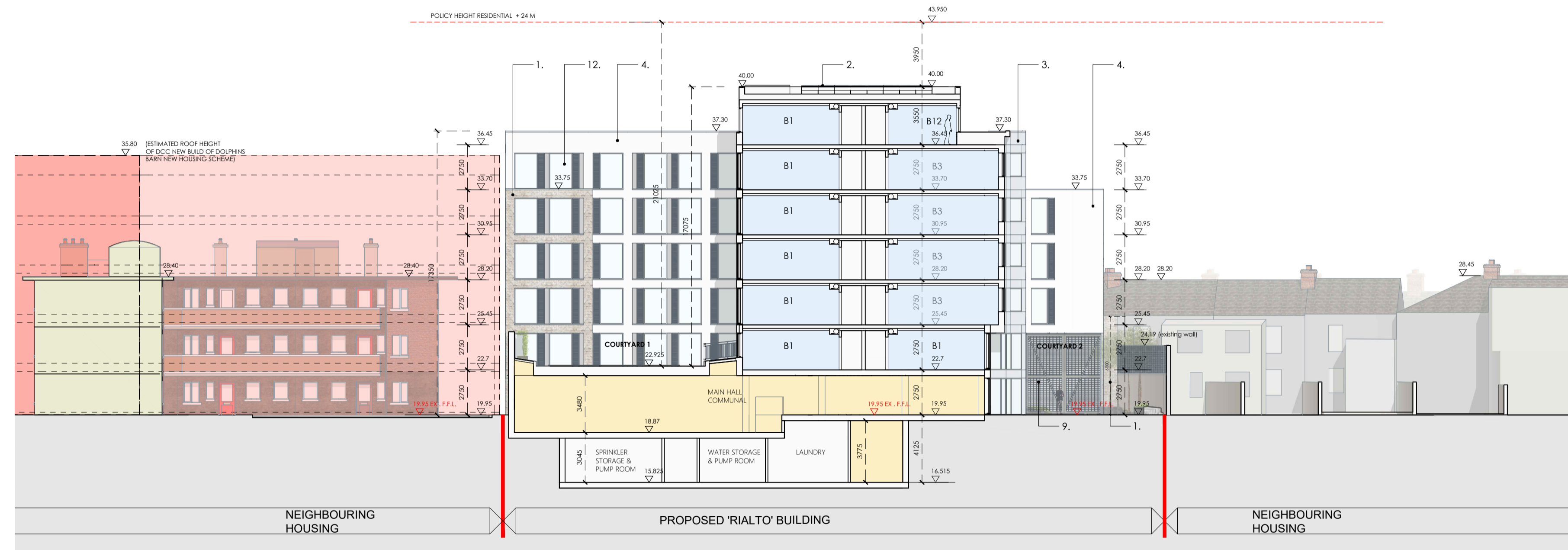
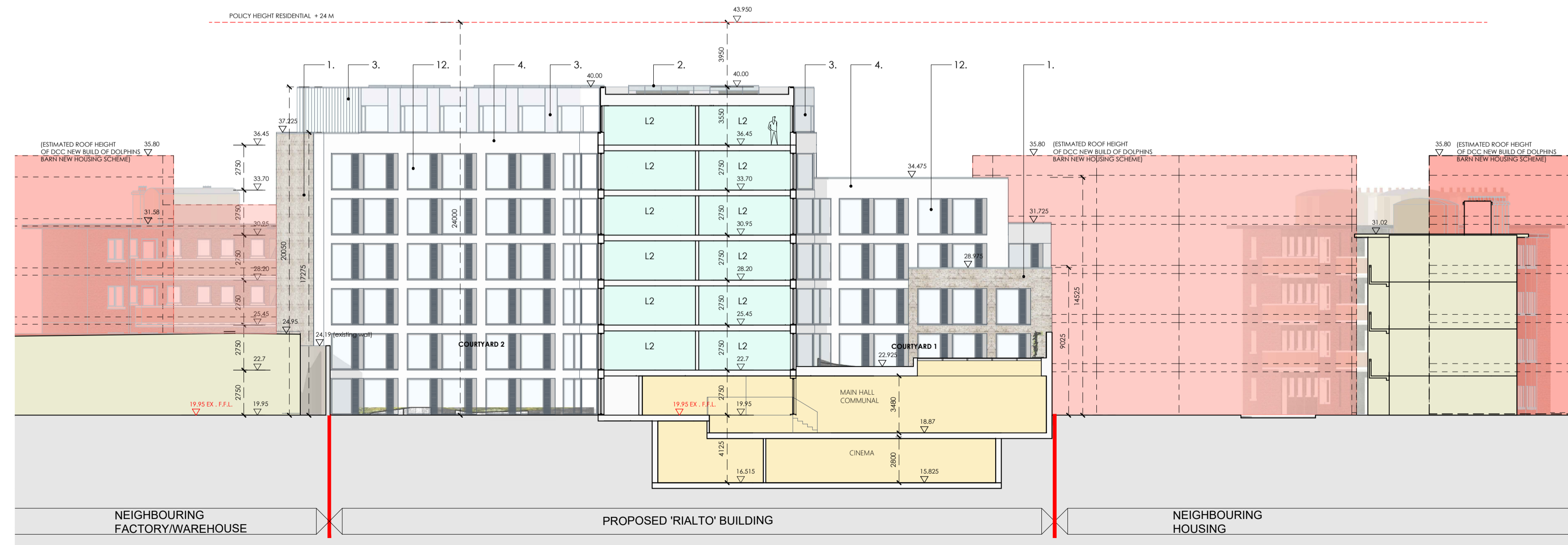


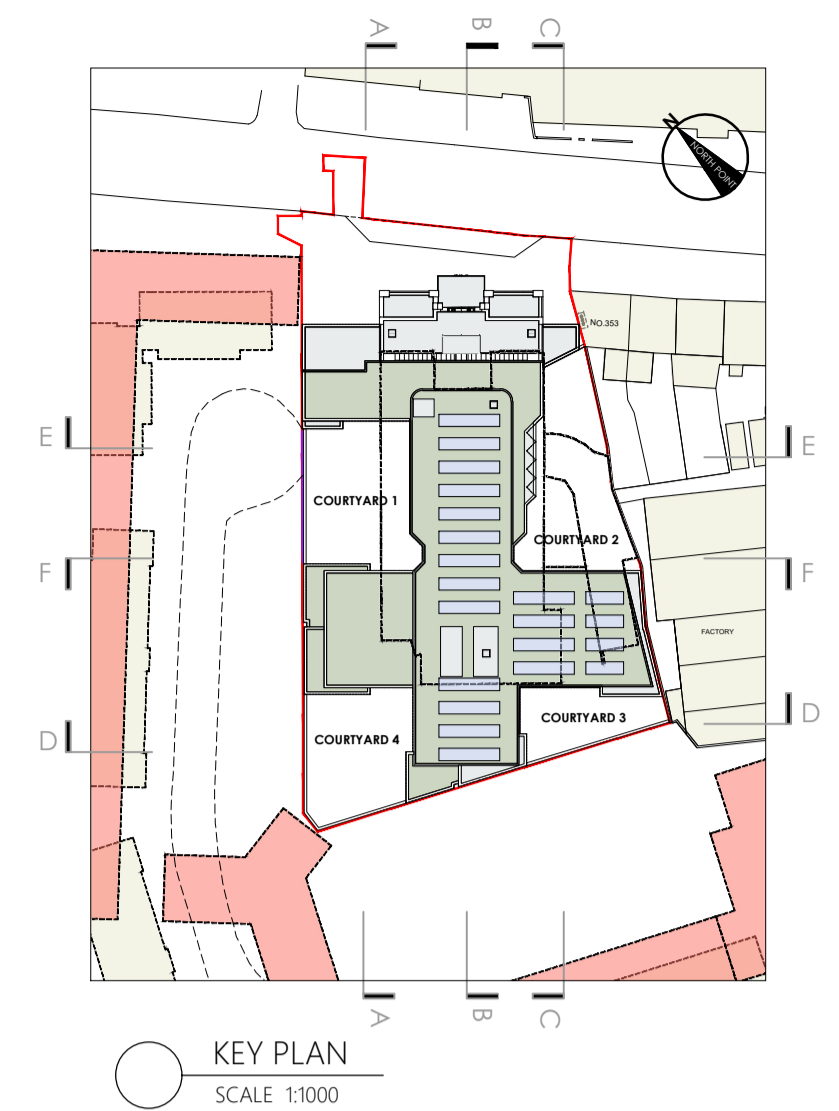
1 SECTION D-D
SCALE 1:200



2 SECTION E-E
SCALE 1:200



3 SECTION F-F
SCALE 1:200



KEY PLAN
SCALE 1:1000

Materials Key

1. Brick finish. Specification to be agreed at Pre Commencement Stage with Local Authority
 2. Photovoltaic solar panels
 3. Aluminum curtain walling or similar approved
 4. White render finish or similar approved
 5. Beige render finish or similar approved
 6. Existing brick finish
 7. Painted glass or similar approved
 8. Steel profile window & door frames or similar approved
 9. Powder coated metal gate/louvers or similar approved
 10. Powder coated aluminum panel or similar approved
 11. Metal railings or similar approved
 12. Aluminum windows with side ventilation louver
- F - Frosted / opaque privacy Glass

LEGEND

- EXISTING BUILDING
- BEDROOM
- STUDIO
- LIVING ROOM
- COMMUNAL AREA
- Indicative DCC new build of Dolphins Barn Housing Scheme

E. June 2019 ISSUED FOR PLANNING
 D. April 2019 ISSUED FOR APPROVAL
 C. March 2019 ISSUED FOR APPROVAL
 B. November 2018 ISSUED FOR APPROVAL
 A. October 2018 ISSUED FOR INFORMATION

SECTIONS

PROJECT: RIALTO STUDENT ACCOMMODATION DRAWING DESCRIPTION: GENERAL ARRANGEMENT DRAWINGS CLIENT: MOLAGA CAPITAL LTD
 SCALE: 1:200 @ A1 DATE: JULY 2018 OVERSEEN BY: GB APPROVED BY: KMC DRAWING NO.: SB-2017-015-302

SHIPSEYBARRY

1:200 A1